



Certificate ID: **93607**

Received: **3/30/21**

Scan QR Code for authenticity

**Glocare, LLC**

Client Sample ID: **Welliva CBD CBG Salve**

**PO Box 3324**

Lot Number: **4-21-S1**

**Burlington, VT 05408**

Matrix: **Topicals - Salve**

**Attn: Alphonse Papali**



Authorization: Chris Hudalla, Chief Science Officer	Signature: <i>Christopher Hudalla</i>	Date: 4/5/2021
--	--	-------------------



The data contained within this report was collected in accordance with the requirements of ISO/IEC17025:2017. I attest that the information contained within the report has been reviewed for accuracy and checked against the quality control requirements for each method. These results relate only to the test article listed in this report. Reports may not be reproduced except in their entirety.

**CN: Cannabinoid Profile & Potency [WI-10-17 & WI-10-17-01]**

Analyst: AC

Test Date: 4/1/2021

The client sample was analyzed for plant-based cannabinoids by Liquid Chromatography (LC). The collected data was compared to data collected for certified reference standards at known concentrations.

**93607-CN**

ID	Weight %	Concentration (mg/g)		
D9-THC	ND	ND		
THCV	ND	ND		
CBD	1.84	18.4		
CBDV	0.100	1.00		
CBG	1.85	18.5		
CBC	0.536	5.36		
CBN	0.193	1.93		
THCA	ND	ND		
CBDA	ND	ND		
CBGA	ND	ND		
D8-THC	ND	ND		
exo-THC	ND	ND		
Total	4.51	45.1	0%	Cannabinoids (wt%) 1.8%
Max THC	ND	ND		Limit of Quantitation (LOQ) = 0.0102 wt%
Max CBD	1.84	18.4		Limit of Detection (LOD) = 0.0034 wt%

Max THC (and Max CBD) are calculated values for total cannabinoids after heating, assuming complete decarboxylation of the acid to the neutral form. It is calculated based on the weight loss of the acid group during decarboxylation:  $\text{Max THC} = (0.877 \times \text{THCA}) + \text{THC}$ . This calculation does not include other cannabinoid isomers (eg. D8-THC and exo-THC). ND = None detected above the limits of detection (LOD), which is one third of LOQ.

## END OF REPORT

# WELLIVA



## Certified Organic Full-Spectrum **CBG** extract Lab results

1. Potency
2. Heavy Metals
3. Microbial
4. Mycotoxin
5. Pesticides



**WELLIVA**

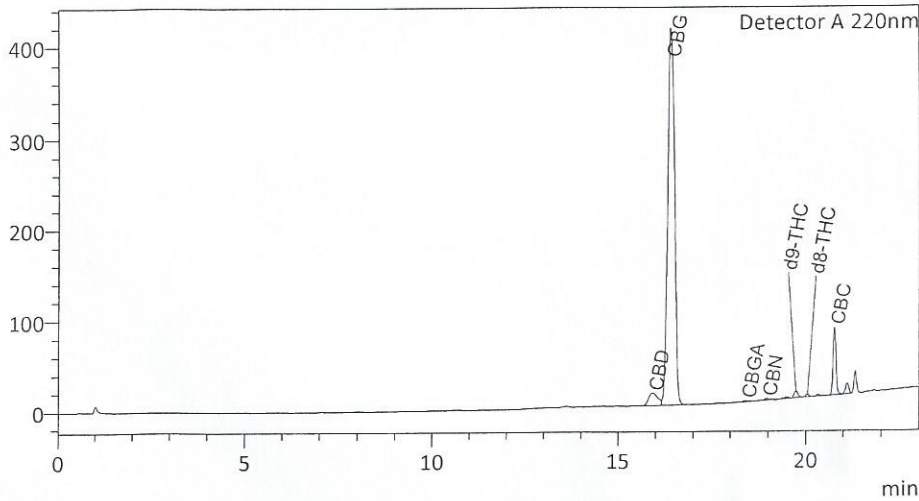
# Certificate of Analysis

## Sample Information

Sample ID : P-NHC-CBG-1MB1\_12162019  
 Sample Type : Whole Plant Extract, CO2  
 Analyst : KB  
 Receipt Date : NA  
 Test Date : 12/17/2019

## Chromatogram

mV



## Cannabinoid Summary

Detector A

ID#	Name	Weight %
1	CBDV	0.00
2	CBD	2.78
3	CBG	66.95
4	CBDA	0.00
5	CBGA	0.11
6	CBN	0.08
7	d9-THC	0.69
8	d8-THC	0.25
9	CBC	4.89
10	THCA-A	0.00

Total CBG	67.05	%
Total CBG	670.53	mg/g
Total THC	0.69	%
Total THC	6.89	mg/g



Percentage data represents weight percentage of sample

The collected data was compared to data collected for certified reference standards at known concentrations.

Total THC = THCa \* 0.877 + d9-THC; Total CBD = CBDA \* 0.877 + CBD; Instrument: High Performance Liquid Chromatography (HPLC)

A value of 0.00 indicates that the cannabinoid was not detected (ND), however it could be present at a level below the limit of detection.



# P-NHC-CBG-1MB

-  
Total Cannabinoids      Serving Size

BATCH # N/A - Tested 12/20/2019 for Safety

## SAFETY PROFILES

### Heavy Metals Screen

	Allowable Limit	Amount Detected	Limit of Detection	Limit of Quantification	Disposition
Arsenic	200 ppb	ND	41.9 ppb	127.0 ppb	N/A
Cadmium	200 ppb	204 ppb	37.7 ppb	114.1 ppb	N/A
Mercury	100 ppb	BQL	21.6 ppb	65.6 ppb	N/A
Lead	500 ppb	ND	20.6 ppb	62.6 ppb	N/A

### Microbiological Contaminant Screen

	Allowable Limit	Amount Detected	Disposition
Total Viable Aerobic Bacteria	10000 CFU/g	<100 CFU/g	N/A
Total Yeast & Mold	1000 CFU/g	<100 CFU/g	N/A
Total Bile-Tolerant Gram Negative Bacteria	100 CFU/g	<100 CFU/g	N/A
STEC	Not Detected in 1 gram	Not Detected	N/A
Salmonella	Not Detected in 1 gram	Not Detected	N/A



## Mycotoxin Screen

	Allowable Limit	Amount Detected	Limit of Detection	Limit of Quantification	Disposition
Ochratoxin A	N/A	ND	2.3 ppb	7.6 ppb	N/A
Aflatoxin B1	5 ppb	ND	1.0 ppb	3.3 ppb	N/A
Aflatoxin B2	N/A	ND	1.9 ppb	6.3 ppb	N/A
Aflatoxin G1	N/A	ND	1.2 ppb	4.0 ppb	N/A
Aflatoxin G2	N/A	ND	1.1 ppb	3.6 ppb	N/A

## Pesticide Screen

	Allowable Limit	Amount Detected	Limit of Detection	Limit of Quantification	Disposition
Imazalil	7.9 ppb	ND	7.9 ppb	25.9 ppb	N/A
Imidacloprid	34.7 ppb	ND	34.7 ppb	114.4 ppb	N/A
Myclobutanil	14.8 ppb	ND	14.8 ppb	49 ppb	N/A
Trifloxystrobin	17.9 ppb	ND	17.9 ppb	59.1 ppb	N/A
Acephate	19.6 ppb	ND	19.6 ppb	64.8 ppb	N/A
Acetamiprid	8.7 ppb	ND	8.7 ppb	28.8 ppb	N/A
Aldicarb	13.3 ppb	ND	13.3 ppb	43.9 ppb	N/A
Carbaryl	11.2 ppb	ND	11.2 ppb	37 ppb	N/A
Chlorantraniliprole	14.7 ppb	ND	14.7 ppb	48.4 ppb	N/A
Chlorpyrifos	16.4 ppb	ND	16.4 ppb	54 ppb	N/A
Clofentezine	20.5 ppb	ND	20.5 ppb	67.5 ppb	N/A
DDVP	21.7 ppb	ND	21.7 ppb	71.6 ppb	N/A
Dimethoate	14.9 ppb	ND	14.9 ppb	49.1 ppb	N/A
Ethoprophos	18.8 ppb	ND	18.8 ppb	62.2 ppb	N/A
Fenoxycarb	8.7 ppb	ND	8.7 ppb	28.8 ppb	N/A
Fenpyroximate	6.3 ppb	ND	6.3 ppb	20.7 ppb	N/A

Flonicamid	9.5 ppb	ND	9.5 ppb	31.3 ppb	N/A
Fludioxonil	N/A	N/A	N/A	N/A	N/A
Malathion	19.9 ppb	ND	19.9 ppb	65.8 ppb	N/A
Metalaxyl	13.9 ppb	ND	13.9 ppb	45.9 ppb	N/A
Methiocarb	13.9 ppb	ND	13.9 ppb	45.8 ppb	N/A
Methomyl	15.7 ppb	ND	15.7 ppb	51.9 ppb	N/A
Naled	6.6 ppb	ND	6.6 ppb	21.7 ppb	N/A
Oxarnyl	16.2 ppb	ND	16.2 ppb	53.4 ppb	N/A
Propoxur	19.8 ppb	ND	19.8 ppb	65.3 ppb	N/A
Pyridaben	14.5 ppb	ND	14.5 ppb	47.7 ppb	N/A
Spirotetramat	14.6 ppb	ND	14.6 ppb	48.2 ppb	N/A
Spiroxamine	19 ppb	ND	19 ppb	62.7 ppb	N/A
Tebuconazole	17 ppb	ND	17 ppb	56.2 ppb	N/A
Thiacloprid	12.9 ppb	ND	12.9 ppb	42.8 ppb	N/A
Thiamethoxam	11.6 ppb	ND	11.6 ppb	38.4 ppb	N/A

Percentage data represents weight percentage of sample as received by PHR Labs. This report and all information herein shall not be reproduced except in its entirety without the expressed consent of PHR Labs. Results may vary. Results are only for the sample supplied to PHR Labs.

This product has not been analyzed or approved by the FDA. There is limited information on the side effects of using this product, and there may be associated health risks. Marijuana use during pregnancy and breast-feeding may pose potential harm. Do not drive or operate machinery when under the influence of this product. KEEP THIS PRODUCT AWAY FROM CHILDREN.

# WELLIVA



## Broad Spectrum **CBD** Extract Lab Results

1. Potency
2. Microbial
3. Solvents
4. Heavy Metals
5. Pesticides



12423 NE Whitaker Way  
 Portland, OR 97230  
 503-254-1794



**Report Number:** 20-006149/D04.R00  
**Report Date:** 06/23/2020  
**ORELAP#:** OR100028  
**Purchase Order:**  
**Received:** 06/16/20 09:05

**Customer:** Welliva  
**Product identity:** EE-01-003  
**Client/Metric ID:** .  
**Laboratory ID:** 20-006149-0001

### Summary

#### Potency:

Analyte	Result (%)		
CBD	30.9		
CBC	7.74		
CBN	3.48		
CBG <sup>†</sup>	2.27		
CBDV <sup>†</sup>	1.33		
			CBD-Total 30.9% ----- THC-Total <LOQ ----- (Reported in percent of total sample)

#### Residual Solvents:

All analytes passing and less than LOQ.

#### Pesticides:

Analyte	Result (mg/kg)	Limits (mg/kg)	Status
Ethoprophos	0.10	0.20	pass

#### Metals:

Less than LOQ for all analytes.

#### Microbiology:

Less than LOQ for all analytes.

Test results relate only to the parameters tested and to the samples as received by the laboratory. Test results meet all requirements of NELAP and the Columbia Laboratories quality assurance plan unless otherwise noted. This report shall not be reproduced, except in full, without the written consent of this laboratory. Samples will be retained for a maximum of 30 days from the receipt date unless prior arrangements have been made.





12423 NE Whitaker Way  
 Portland, OR 97230  
 503-254-1794

**Report Number:** 20-006149/D04.R00  
**Report Date:** 06/23/2020  
**ORELAP#:** OR100028  
**Purchase Order:**  
**Received:** 06/16/20 09:05

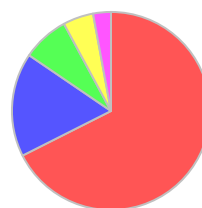


**Customer:** Welliva  
**Product identity:** EE-01-003  
**Client/Metric ID:** .  
**Sample Date:**  
**Laboratory ID:** 20-006149-0001  
**Relinquished by:** Received By Mail  
**Temp:** 19.1 °C

### Sample Results

Potency **Method J AOAC 2015 V98-6 (mod) Batch: 2005103 Analyze: 6/17/20 8:15:00 PM**

Analyte	As Received	Dry weight	LOQ	Notes
CBC	7.74		0.0887	
CBC-A†	< LOQ		0.0887	
CBC-Total†	7.74		0.166	
CBD	30.9		0.887	
CBD-A	< LOQ		0.0887	
CBD-Total	30.9		0.964	
CBDV†	1.33		0.0887	
CBDV-A†	< LOQ		0.0887	
CBDV-Total†	1.33		0.165	
CBG†	2.27		0.0887	
CBG-A†	< LOQ		0.0887	
CBG-Total	2.27		0.165	
CBL†	< LOQ		0.0887	
CBN	3.48		0.0887	
Δ8-THC†	< LOQ		0.0887	
Δ9-THC	< LOQ		0.0887	
THC-A	< LOQ		0.0887	
THC-Total	< LOQ		0.166	
THCV†	< LOQ		0.0887	
THCV-A†	< LOQ		0.0887	
THCV-Total†	< LOQ		0.165	
<b>Total Cannabinoids†</b>	<b>45.7</b>			



- CBD
- CBC
- CBN
- CBG
- CBDV

### Microbiology

Analyte	Result	Limits	Units	LOQ	Batch	Analyze	Method	Notes
Aerobic Plate Count	< LOQ		cfu/g	10	2005001	06/18/20	AOAC 990.12 (Petrifilm)	X
E.coli	< LOQ		cfu/g	10	2004999	06/18/20	AOAC 991.14 (Petrifilm)	X
Total Coliforms	< LOQ		cfu/g	10	2004999	06/18/20	AOAC 991.14 (Petrifilm)	X
Staphylococcus aureus	< LOQ		cfu/g	10	2005000	06/17/20	AOAC 2003.07	X
Mold (RAPID Petrifilm)	< LOQ		cfu/g	10	2004998	06/18/20	AOAC 2014.05 (RAPID)	X
Yeast (RAPID Petrifilm)	< LOQ		cfu/g	10	2004998	06/18/20	AOAC 2014.05 (RAPID)	X
Salmonella spp.	Negative		/1g		2004992	06/17/20	AOAC 2016.01	X

Test results relate only to the parameters tested and to the samples as received by the laboratory. Test results meet all requirements of NELAP and the Columbia Laboratories quality assurance plan unless otherwise noted. This report shall not be reproduced, except in full, without the written consent of this laboratory. Samples will be retained for a maximum of 30 days from the receipt date unless prior arrangements have been made.



12423 NE Whitaker Way  
 Portland, OR 97230  
 503-254-1794



**Report Number:** 20-006149/D04.R00  
**Report Date:** 06/23/2020  
**ORELAP#:** OR100028  
**Purchase Order:**  
**Received:** 06/16/20 09:05

Solvents		Method EPA5021A				Units µg/g	Batch 2005130	Analyze 06/19/20 09:48 AM			
Analyte	Result	Limits	LOQ	Status	Notes	Analyte	Result	Limits	LOQ	Status	Notes
1,4-Dioxane	< LOQ	380	100	pass		2-Butanol	< LOQ	5000	200	pass	
2-Ethoxyethanol	< LOQ	160	30.0	pass		2-Methylbutane	< LOQ		200		
2-Methylpentane	< LOQ		30.0			2-Propanol (IPA)	< LOQ	5000	200	pass	
2,2-Dimethylbutane	< LOQ		30.0			2,2-Dimethylpropane	< LOQ		200		
2,3-Dimethylbutane	< LOQ		30.0			3-Methylpentane	< LOQ		30.0		
Acetone	< LOQ	5000	200	pass		Acetonitrile	< LOQ	410	100	pass	
Benzene	< LOQ	2.00	1.00	pass		Butanes (sum)	< LOQ	5000	400	pass	
Cyclohexane	< LOQ	3880	200	pass		Ethanol <sup>1</sup>	< LOQ		200		
Ethyl acetate	< LOQ	5000	200	pass		Ethyl benzene	< LOQ		200		
Ethyl ether	< LOQ	5000	200	pass		Ethylene glycol	< LOQ	620	200	pass	
Ethylene oxide	< LOQ	50.0	30.0	pass		Hexanes (sum)	< LOQ	290	150	pass	
Isopropyl acetate	< LOQ	5000	200	pass		Isopropylbenzene	< LOQ	70.0	30.0	pass	
m,p-Xylene	< LOQ		200			Methanol	< LOQ	3000	200	pass	
Methylene chloride	< LOQ	600	200	pass		Methylpropane	< LOQ		200		
n-Butane	< LOQ		200			n-Heptane	< LOQ	5000	200	pass	
n-Hexane	< LOQ		30.0			n-Pentane	< LOQ		200		
o-Xylene	< LOQ		200			Pentanes (sum)	< LOQ	5000	600	pass	
Propane	< LOQ	5000	200	pass		Tetrahydrofuran	< LOQ	720	100	pass	
Toluene	< LOQ	890	100	pass		Total Xylenes	< LOQ		400		
Total Xylenes and Ethyl	< LOQ	2170	600	pass							

Test results relate only to the parameters tested and to the samples as received by the laboratory. Test results meet all requirements of NELAP and the Columbia Laboratories quality assurance plan unless otherwise noted. This report shall not be reproduced, except in full, without the written consent of this laboratory. Samples will be retained for a maximum of 30 days from the receipt date unless prior arrangements have been made.



12423 NE Whitaker Way  
 Portland, OR 97230  
 503-254-1794

**Report Number:** 20-006149/D04.R00  
**Report Date:** 06/23/2020  
**ORELAP#:** OR100028  
**Purchase Order:**  
**Received:** 06/16/20 09:05



Pesticides											
Method AOAC 2007.01 & EN 15662 (mod) Units mg/kg Batch 2005099 Analyze 06/18/20 11:03 AM											
Analyte	Result	Limits	LOQ	Status	Notes	Analyte	Result	Limits	LOQ	Status	Notes
Abamectin	< LOQ	0.50	0.250	pass		Acephate	< LOQ	0.40	0.250	pass	
Acequinocyl	< LOQ	2.0	1.00	pass		Acetamiprid	< LOQ	0.20	0.100	pass	
Aldicarb	< LOQ	0.40	0.200	pass		Azoxystrobin	< LOQ	0.20	0.100	pass	
Bifenazate	< LOQ	0.20	0.100	pass		Bifenthrin	< LOQ	0.20	0.100	pass	
Boscalid	< LOQ	0.40	0.200	pass		Carbaryl	< LOQ	0.20	0.100	pass	
Carbofuran	< LOQ	0.20	0.100	pass		Chlorantraniliprole	< LOQ	0.20	0.100	pass	
Chlorfenapyr	< LOQ	1.0	0.500	pass		Chlorpyrifos	< LOQ	0.20	0.100	pass	
Clofentezine	< LOQ	0.20	0.100	pass		Cyfluthrin	< LOQ	1.0	0.500	pass	
Cypermethrin	< LOQ	1.0	0.500	pass		Daminozide	< LOQ	1.0	0.500	pass	
Diazinon	< LOQ	0.20	0.100	pass		Dichlorvos	< LOQ	1.0	0.500	pass	
Dimethoate	< LOQ	0.20	0.100	pass		Ethoprophos	0.10	0.20	0.100	pass	
Etofenprox	< LOQ	0.40	0.200	pass		Etoxazole	< LOQ	0.20	0.100	pass	
Fenoxycarb	< LOQ	0.20	0.100	pass		Fenpyroximate	< LOQ	0.40	0.200	pass	
Fipronil	< LOQ	0.40	0.200	pass		Fonicamid	< LOQ	1.0	0.400	pass	
Fludioxonil	< LOQ	0.40	0.200	pass		Hexythiazox	< LOQ	1.0	0.400	pass	
Imazalil	< LOQ	0.20	0.100	pass		Imidacloprid	< LOQ	0.40	0.200	pass	
Kresoxim-methyl	< LOQ	0.40	0.200	pass		Malathion	< LOQ	0.20	0.100	pass	
Metalaxyl	< LOQ	0.20	0.100	pass		Methiocarb	< LOQ	0.20	0.100	pass	
Methomyl	< LOQ	0.40	0.200	pass		MGK-264	< LOQ	0.20	0.100	pass	
Myclobutanil	< LOQ	0.20	0.100	pass		Naled	< LOQ	0.50	0.250	pass	
Oxamyl	< LOQ	1.0	0.500	pass		Paclobutrazole	< LOQ	0.40	0.200	pass	
Parathion-Methyl	< LOQ	0.20	0.200	pass		Permethrin	< LOQ	0.20	0.100	pass	
Phosmet	< LOQ	0.20	0.100	pass		Piperonyl butoxide	< LOQ	2.0	1.00	pass	
Prallethrin	< LOQ	0.20	0.200	pass		Propiconazole	< LOQ	0.40	0.200	pass	
Propoxur	< LOQ	0.20	0.100	pass		Pyrethrin I (total)	< LOQ	1.0	0.500	pass	
Pyridaben	< LOQ	0.20	0.100	pass		Spinosad	< LOQ	0.20	0.100	pass	
Spiromesifen	< LOQ	0.20	0.100	pass		Spirotetramat	< LOQ	0.20	0.100	pass	
Spiroxamine	< LOQ	0.40	0.200	pass		Tebuconazole	< LOQ	0.40	0.200	pass	
Thiacloprid	< LOQ	0.20	0.100	pass		Thiamethoxam	< LOQ	0.20	0.100	pass	
Trifloxystrobin	< LOQ	0.20	0.100	pass							

Metals										
Analyte	Result	Limits	Units	LOQ	Batch	Analyze	Method	Notes		
Arsenic	< LOQ		mg/kg	0.0399	2005167	06/22/20	AOAC 2013.06 (mod.)	X		
Cadmium	< LOQ		mg/kg	0.0399	2005167	06/22/20	AOAC 2013.06 (mod.)	X		
Lead	< LOQ		mg/kg	0.0399	2005167	06/22/20	AOAC 2013.06 (mod.)	X		
Mercury	< LOQ		mg/kg	0.0199	2005167	06/22/20	AOAC 2013.06 (mod.)	X		

Test results relate only to the parameters tested and to the samples as received by the laboratory. Test results meet all requirements of NELAP and the Columbia Laboratories quality assurance plan unless otherwise noted. This report shall not be reproduced, except in full, without the written consent of this laboratory. Samples will be retained for a maximum of 30 days from the receipt date unless prior arrangements have been made.



12423 NE Whitaker Way  
Portland, OR 97230  
503-254-1794



**Report Number:** 20-006149/D04.R00  
**Report Date:** 06/23/2020  
**ORELAP#:** OR100028  
**Purchase Order:**  
**Received:** 06/16/20 09:05

These test results are representative of the individual sample selected and submitted by the client.

**Abbreviations**

**Limits:** Action Levels per OAR-333-007-0400, OAR-333-007-0210, OAR-333-007-0220

**Limit(s) of Quantitation (LOQ):** The minimum levels, concentrations, or quantities of a target variable (e.g., target analyte) that can be reported with a specified degree of confidence.

† = Analyte not NELAP accredited.

**Units of Measure**

cfu/g = Colony forming units per gram

µg/g = Microgram per gram

mg/kg = Milligram per kilogram = parts per million (ppm)

/1g = Per 1 gram

% = Percentage of sample

% wt = µg/g divided by 10,000

**Glossary of Qualifiers**

X: Not ORELAP accredited.

Approved Signatory

Derrick Tanner  
General Manager



12423 NE Whitaker Way  
Portland, OR 97230  
503-254-1794

Report Number: 20-006149/D04.R00  
Report Date: 06/23/2020  
ORELAP#: OR100028  
Purchase Order:  
Received: 06/16/20 09:05



Revision: 1.00 Control: CFL-C21  
Revised: 08/12/2019 Effective: 08/15/2019

Laboratory Pesticide Quality Control Results

AOAC 2007.1 & EN 15662		Units: mg/Kg					Batch ID: 2005099				
Matrix Spike/Matrix Spike Duplicate Recoveries		Sample ID: 20-005991-0001									
Analyte	Result	MS Res	MSD Res	Spike	RPD%	Limit	MS % Rec	MSD % Rec	Limits	Notes	
Acephate	0.000	0.980	1.006	1.000	2.6	< 30	98.0	100.6	50 - 150		
Acequinocyl	0.200	3.981	3.916	4.000	1.7	< 30	94.5	92.9	50 - 150		
Acetamiprid	0.000	0.425	0.423	0.400	0.3	< 30	106.2	105.8	50 - 150		
Aldicarb	0.000	0.817	0.823	0.800	0.7	< 30	102.1	102.9	50 - 150		
Abamectin	0.000	1.010	0.880	1.000	13.8	< 30	101.0	88.0	50 - 150		
Azoxystrobin	0.016	0.407	0.403	0.400	1.0	< 30	98.0	96.9	50 - 150		
Bifentazate	0.004	0.448	0.432	0.400	3.8	< 30	111.2	107.0	50 - 150		
Bifenthrin	0.018	0.384	0.343	0.400	11.2	< 30	91.4	81.2	50 - 150		
Boscalid	0.019	0.835	0.879	0.800	5.2	< 30	102.0	107.6	50 - 150		
Carbaryl	0.006	0.404	0.419	0.400	3.7	< 30	99.6	103.4	50 - 150		
Carbofuran	0.015	0.427	0.441	0.400	3.2	< 30	102.8	106.3	50 - 150		
Chlorantraniliprol	0.000	0.455	0.389	0.400	15.7	< 30	113.8	97.3	50 - 150		
Chlorfenapyr	0.000	2.194	2.510	2.000	13.4	< 30	109.7	125.5	50 - 150		
Chlorpyrifos	0.008	0.404	0.415	0.400	2.5	< 30	99.1	101.7	50 - 150		
Clofentezine	0.011	0.461	0.469	0.400	1.7	< 30	112.5	114.5	50 - 150		
Cyfluthrin	0.000	2.188	1.947	2.000	11.6	< 30	109.4	97.3	30 - 150		
Cypermethrin	0.000	2.178	2.067	2.000	5.2	< 30	108.9	103.3	50 - 150		
Daminozide	0.036	2.102	2.118	2.000	0.7	< 30	103.3	104.1	30 - 150		
Diazinon	0.010	0.445	0.464	0.400	4.3	< 30	108.7	113.5	50 - 150		
Dichlorvos	0.021	1.999	1.926	2.000	3.8	< 30	98.9	95.2	50 - 150		
Dimethoat	0.005	0.407	0.409	0.400	0.6	< 30	100.3	101.0	50 - 150		
Ethoprophos	0.015	0.391	0.415	0.400	6.1	< 30	94.1	100.2	50 - 150		
Etofenprox	0.035	0.927	0.917	0.800	1.1	< 30	111.5	110.2	50 - 150		
Etoxazol	0.011	0.397	0.395	0.400	0.5	< 30	96.5	96.0	50 - 150		
Fenoxycarb	0.000	0.455	0.444	0.400	2.4	< 30	113.7	111.1	50 - 150		
Fenpyroximat	0.000	0.771	0.745	0.800	3.5	< 30	96.4	93.1	50 - 150		
Fipronil	0.030	0.987	0.971	0.800	1.6	< 30	119.7	117.7	50 - 150		
Flonicamid	0.019	0.998	1.040	1.000	4.1	< 30	97.9	102.1	50 - 150		
Fludioxonil	0.000	0.811	0.789	0.800	2.7	< 30	101.4	98.7	50 - 150		
Hexythiazox	0.000	2.074	1.978	1.000	4.7	< 30	207.4	197.8	50 - 150	Q1	
Imazalil	0.003	0.347	0.332	0.400	4.3	< 30	85.9	82.2	50 - 150		
Imidacloprid	0.016	0.905	0.877	0.800	3.2	< 30	111.1	107.5	50 - 150		
Kresoxim-Methyl	0.000	0.877	0.816	0.800	7.2	< 30	109.6	102.0	50 - 150		
Malathion	0.007	0.429	0.438	0.400	2.1	< 30	105.4	107.7	50 - 150		
Metaxalyl	0.004	0.418	0.419	0.400	0.1	< 30	103.5	103.6	50 - 150		
Methiocarb	0.007	0.446	0.434	0.400	2.8	< 30	109.8	106.7	50 - 150		
Methomyl	0.000	0.776	0.799	0.800	2.9	< 30	97.1	99.9	50 - 150		
MGK 264	0.000	0.465	0.462	0.400	0.6	< 30	116.3	115.6	50 - 150		
Myclobutanil	0.000	0.420	0.407	0.400	3.1	< 30	105.0	101.8	50 - 150		
Naled	0.000	1.140	1.131	1.000	0.7	< 30	114.0	113.1	50 - 150		
Oxamyl	0.000	2.063	2.011	2.000	2.6	< 30	103.2	100.6	50 - 150		
Paclobutrazol	0.000	0.911	0.897	0.800	1.5	< 30	113.8	112.2	50 - 150		
Parathion Methyl	0.000	0.982	1.033	0.800	5.1	< 30	122.7	129.1	30 - 150		
Permethrin	0.001	0.418	0.425	0.400	1.4	< 30	104.2	105.8	50 - 150		
Phosmet	0.000	0.406	0.428	0.400	5.3	< 30	101.4	106.9	50 - 150		
Piperonyl butoxide	0.011	2.182	2.036	2.000	6.9	< 30	108.5	101.2	50 - 150		
Prallethrin	0.000	0.628	0.637	0.400	1.4	< 30	157.1	159.2	50 - 150	Q1	
Propiconazole	0.003	0.871	0.878	0.800	0.8	< 30	108.5	109.4	50 - 150		
Propoxur	0.014	0.406	0.407	0.400	0.3	< 30	98.1	98.4	50 - 150		
Pyrethrins	0.005	0.474	0.436	0.413	8.2	< 30	113.5	104.4	50 - 150		
Pyridaben	0.012	0.417	0.394	0.400	5.6	< 30	101.2	95.6	50 - 150		
Spinosad	0.000	0.357	0.357	0.388	0.1	< 30	92.0	92.0	50 - 150		
Spiromesifen	0.000	0.492	0.494	0.400	0.4	< 30	122.9	123.4	50 - 150		
Spirotetramat	0.000	0.418	0.435	0.400	3.9	< 30	104.6	108.8	50 - 150		
Spiroxamine	0.020	0.780	0.778	0.800	0.3	< 30	95.0	94.8	50 - 150		
Tebuconazol	0.026	0.994	1.008	0.800	1.4	< 30	121.0	122.8	50 - 150		
Thiacloprid	0.000	0.415	0.417	0.400	0.4	< 30	103.8	104.2	50 - 150		
Thiamethoxam	0.000	0.422	0.419	0.400	0.9	< 30	105.6	104.6	50 - 150		
Trifloxystrobin	0.013	0.419	0.421	0.400	0.3	< 30	101.5	102.0	50 - 150		

Test results relate only to the parameters tested and to the samples as received by the laboratory. Test results meet all requirements of NELAP and the Columbia Laboratories quality assurance plan unless otherwise noted. This report shall not be reproduced, except in full, without the written consent of this laboratory. Samples will be retained for a maximum of 30 days from the receipt date unless prior arrangements have been made.





12423 NE Whitaker Way  
 Portland, OR 97230  
 503-254-1794



**Report Number:** 20-006149/D04.R00  
**Report Date:** 06/23/2020  
**ORELAP#:** OR100028  
**Purchase Order:**  
**Received:** 06/16/20 09:05

Revision: 1.00 Control: CFL-C21  
 Revised: 08/12/2019 Effective: 08/15/2019

**Laboratory Pesticide Quality Control Results**

AOAC 2007.1 & EN 15662		Units: mg/Kg		Batch ID: 2005099				
Method Blank		Laboratory Control Sample						
Analyte	Blank Result	Blank Limits	Notes	LCS Result	LCS Spike	LCS % Rec	Limits	Notes
Acephate	0.000	< 0.200		0.956	1.000	95.6	68.4 - 125	
Acequinocyl	0.287	< 1.000		3.678	4.000	92.0	79.1 - 119	
Acetamiprid	0.000	< 0.100		0.412	0.400	103.0	81.1 - 117	
Aldicarb	0.000	< 0.200		0.778	0.800	97.2	77.2 - 120	
Abamectin	0.000	< 0.288		0.977	1.000	97.7	73.5 - 125	
Azoxystrobin	0.018	< 0.100		0.372	0.400	93.1	72.4 - 126	
Bifentazate	0.001	< 0.100		0.412	0.400	103.1	81.5 - 116	
Bifenthrin	0.013	< 0.100		0.394	0.400	98.4	78.3 - 120	
Boscalid	0.020	< 0.100		0.690	0.800	86.3	74.8 - 126	
Carbaryl	0.006	< 0.100		0.379	0.400	94.7	79.9 - 119	
Carbofuran	0.017	< 0.100		0.406	0.400	101.4	81.8 - 118	
Chlorantraniliprol	0.000	< 0.100		0.401	0.400	100.2	75.0 - 127	
Chlorfenapyr	0.000	< 1.000		2.152	2.000	107.6	68.3 - 127	
Chlorpyrifos	0.012	< 0.100		0.392	0.400	97.9	73.2 - 117	
Clofentezine	0.011	< 0.100		0.395	0.400	98.9	67.1 - 125	
Cyfluthrin	0.000	< 1.000		2.071	2.000	103.6	69.7 - 129	
Cypermethrin	0.017	< 1.000		2.036	2.000	101.8	80.2 - 119	
Daminozide	0.039	< 1.000		1.981	2.000	99.0	75.1 - 120	
Diazinon	0.011	< 0.100		0.393	0.400	98.1	80.0 - 118	
Dichlorvos	0.021	< 0.500		2.011	2.000	100.6	76.1 - 117	
Dimethoat	0.006	< 0.100		0.406	0.400	101.5	79.8 - 117	
Ethoprophos	0.016	< 0.100		0.408	0.400	102.1	72.3 - 126	
Etofenprox	0.011	< 0.100		0.778	0.800	97.3	82.6 - 116	
Etoxazol	0.015	< 0.100		0.370	0.400	92.5	77.6 - 120	
Fenoxycarb	0.000	< 0.100		0.411	0.400	102.8	82.6 - 115	
Fenpyroximat	0.001	< 0.100		0.777	0.800	97.2	82.5 - 115	
Fipronil	0.041	< 0.100		0.828	0.800	103.5	78.4 - 121	
Flonicamid	0.027	< 0.400		1.011	1.000	101.1	79.0 - 121	
Fludioxonil	0.000	< 0.100		0.810	0.800	101.3	73.1 - 136	
Hexythiazox	0.020	< 0.400		1.003	1.000	100.3	81.5 - 118	
Imazalil	0.006	< 0.100		0.429	0.400	107.3	79.1 - 126	
Imidacloprid	0.022	< 0.200		0.832	0.800	104.0	78.0 - 119	
Kresoxim-Methyl	0.006	< 0.100		0.783	0.800	97.9	75.7 - 126	
Malathion	0.009	< 0.100		0.401	0.400	100.4	77.8 - 120	
Metaxalyl	0.004	< 0.100		0.416	0.400	103.9	75.8 - 123	
Methiocarb	0.009	< 0.100		0.404	0.400	101.1	78.7 - 122	
Methomyl	0.000	< 0.200		0.793	0.800	99.2	73.2 - 125	
MGK 264	0.009	< 0.100		0.405	0.400	101.2	79.7 - 119	
Myclobutanil	0.000	< 0.100		0.385	0.400	96.1	83.4 - 115	
Naled	0.010	< 0.200		1.046	1.000	104.6	73.2 - 124	
Oxamyl	0.000	< 0.400		2.043	2.000	102.2	71.8 - 126	
Paclobutrazol	0.000	< 0.200		0.798	0.800	99.7	81.9 - 117	
Parathion Methyl	0.000	< 0.200		0.995	0.800	124.4	68.5 - 127	
Permethrin	0.000	< 0.100		0.393	0.400	98.1	79.0 - 117	
Phosmet	0.000	< 0.100		0.401	0.400	100.3	81.2 - 118	
Piperonyl butoxide	0.042	< 1.000		2.032	2.000	101.6	83.2 - 121	
Prallethrin	0.018	< 0.200		0.414	0.400	103.4	70.1 - 130	
Propiconazole	0.014	< 0.200		0.810	0.800	101.3	81.1 - 116	
Propoxur	0.014	< 0.100		0.394	0.400	98.5	81.8 - 114	
Pyrethrins	0.010	< 0.500		0.436	0.413	105.7	69.9 - 130	
Pyridaben	0.013	< 0.100		0.427	0.400	106.9	79.7 - 127	
Spinosad	0.000	< 0.100		0.404	0.388	104.0	83.3 - 125	
Spiromesifen	0.000	< 0.100		0.403	0.400	100.7	68.9 - 128	
Spirotetramat	0.007	< 0.100		0.401	0.400	100.2	80.6 - 118	
Spiroxamine	0.021	< 0.100		0.802	0.800	100.2	79.4 - 119	
Tebuconazol	0.013	< 0.200		0.830	0.800	103.8	79.8 - 119	
Thiacloprid	0.009	< 0.100		0.406	0.400	101.6	79.2 - 118	
Thiamethoxam	0.000	< 0.100		0.390	0.400	97.5	72.3 - 127	
Trifloxystrobin	0.014	< 0.100		0.408	0.400	102.1	80.0 - 118	

Test results relate only to the parameters tested and to the samples as received by the laboratory. Test results meet all requirements of NELAP and the Columbia Laboratories quality assurance plan unless otherwise noted. This report shall not be reproduced, except in full, without the written consent of this laboratory. Samples will be retained for a maximum of 30 days from the receipt date unless prior arrangements have been made.



12423 NE Whitaker Way  
Portland, OR 97230  
503-254-1794



**Report Number:** 20-006149/D04.R00  
**Report Date:** 06/23/2020  
**ORELAP#:** OR100028  
**Purchase Order:**  
**Received:** 06/16/20 09:05

Revision #: 0.00 Control : CFL-D06  
Revision Date: 05/31/2019 Effective Date: 05/31/2019

Laboratory Quality Control Results

JAOAC2015 V98-6 Batch ID: 2005103

Laboratory Control Sample

Analyte	Result	Spike	Units	% Rec	Limits	Evaluation	Notes
CBDVA	0.205	0.2	%	103	85.0 - 115	Acceptable	
CBDV	0.208	0.2	%	104	85.0 - 115	Acceptable	
CBD-A	0.198	0.2	%	98.8	85.0 - 115	Acceptable	
CBG-A	0.203	0.2	%	102	85.0 - 115	Acceptable	
CBG	0.206	0.2	%	103	85.0 - 115	Acceptable	
CBD	0.181	0.2	%	90.3	85.0 - 115	Acceptable	
THCV	0.193	0.2	%	96.7	85.0 - 115	Acceptable	
THCVA	0.195	0.2	%	97.5	85.0 - 115	Acceptable	
CBN	0.189	0.2	%	94.6	85.0 - 115	Acceptable	
THC	0.196	0.2	%	98.2	85.0 - 115	Acceptable	
D8THC	0.194	0.2	%	97.2	85.0 - 115	Acceptable	
CBL	0.193	0.2	%	96.5	85.0 - 115	Acceptable	
CBG	0.204	0.2	%	102	85.0 - 115	Acceptable	
THCA	0.173	0.2	%	86.4	85.0 - 115	Acceptable	
CBDA	0.191	0.2	%	95.5	85.0 - 115	Acceptable	

Method Blank

Analyte	Result	LOQ	Units	Limits	Evaluation	Notes
CBDVA	<LOQ	0.01	%	< 0.01	Acceptable	
CBDV	<LOQ	0.01	%	< 0.01	Acceptable	
CBD-A	<LOQ	0.01	%	< 0.01	Acceptable	
CBG-A	<LOQ	0.01	%	< 0.01	Acceptable	
CBG	<LOQ	0.01	%	< 0.01	Acceptable	
CBD	<LOQ	0.01	%	< 0.01	Acceptable	
THCV	<LOQ	0.01	%	< 0.01	Acceptable	
THCVA	<LOQ	0.01	%	< 0.01	Acceptable	
CBN	<LOQ	0.01	%	< 0.01	Acceptable	
THC	<LOQ	0.01	%	< 0.01	Acceptable	
D8THC	<LOQ	0.01	%	< 0.01	Acceptable	
CBL	<LOQ	0.01	%	< 0.01	Acceptable	
CBG	<LOQ	0.01	%	< 0.01	Acceptable	
THCA	<LOQ	0.01	%	< 0.01	Acceptable	
CBDA	<LOQ	0.01	%	< 0.01	Acceptable	

Abbreviations

- ND - None Detected at or above MRL
- RPD - Relative Percent Difference
- LOQ - Limit of Quantitation

Units of Measure

%- Percent



12423 NE Whitaker Way  
Portland, OR 97230  
503-254-1794



**Report Number:** 20-006149/D04.R00  
**Report Date:** 06/23/2020  
**ORELAP#:** OR100028  
**Purchase Order:**  
**Received:** 06/16/20 09:05

Revision #: 0.00 Control : CFL-D06  
Revision Date: 05/31/2019 Effective Date: 05/31/2019

Laboratory Quality Control Results

JAOAC2015 V986		Batch ID: 2005103							
Sample Duplicate		Sample ID: 20-005988-0001							
Analyte	Result	Org. Result	LOQ	Units	RPD	Limits	Evaluation	Notes	
CBDV-A	<LOQ	<LOQ	0.1	%	NA	< 20	Acceptable		
CBDV	<LOQ	<LOQ	0.1	%	NA	< 20	Acceptable		
CBD-A	<LOQ	<LOQ	0.1	%	NA	< 20	Acceptable		
CBG-A	<LOQ	<LOQ	0.1	%	NA	< 20	Acceptable		
CBG	2.30	2.24	0.1	%	2.71	< 20	Acceptable		
CBD	17.8	17.3	0.1	%	2.59	< 20	Acceptable		
THCV	0.528	0.515	0.1	%	2.36	< 20	Acceptable		
THCVA	<LOQ	<LOQ	0.1	%	NA	< 20	Acceptable		
CBN	0.515	0.502	0.1	%	2.59	< 20	Acceptable		
THC	74.0	71.2	0.1	%	3.84	< 20	Acceptable		
D8THC	<LOQ	<LOQ	0.1	%	NA	< 20	Acceptable		
CBL	<LOQ	<LOQ	0.1	%	NA	< 20	Acceptable		
CBG	3.01	2.91	0.1	%	3.41	< 20	Acceptable		
THCA	<LOQ	<LOQ	0.1	%	NA	< 20	Acceptable		
CBGA	<LOQ	<LOQ	0.1	%	NA	< 20	Acceptable		

Abbreviations

- ND - None Detected at or above MRL
- RPD - Relative Percent Difference
- LOQ - Limit of Quantitation
- NA - Calculation Not Applicable given non-numerical results

Units of Measure

% - Percent



12423 NE Whitaker Way  
 Portland, OR 97230  
 503-254-1794



**Report Number:** 20-006149/D04.R00  
**Report Date:** 06/23/2020  
**ORELAP#:** OR100028  
**Purchase Order:**  
**Received:** 06/16/20 09:05

Laboratory Quality Control Results

EPA 5021					Batch ID: 2005130						
Method Blank					Laboratory Control Sample						
Analyte	Result	LOQ	Notes	Result	Spike	Units	% Rec	Limits	Notes		
Butane	ND	< 200		1810	1,520	µg/g	119.1	70 - 130			
2-Methylbutane	ND	< 200		3960	3,210	µg/g	123.4	70 - 130			
Pentane	ND	< 200		3260	3,210	µg/g	101.6	70 - 130			

QC - Sample Duplicate					Sample ID: 20-005985-0005				
Analyte	Result	Org. Result	LOQ	Units	RPD	Limits	Accept/Fail	Notes	
Butane	ND	ND	200	µg/g	0.0	< 20	Acceptable		
2-Methylbutane	ND	ND	200	µg/g	0.0	< 20	Acceptable		
Pentane	ND	ND	200	µg/g	0.0	< 20	Acceptable		

Abbreviations

- ND - None Detected at or above MRL
- RPD - Relative Percent Difference
- LOQ - Limit of Quantitation
- \* Screening only
- Q1 - Quality Control result biased high. Only non detect samples reported.

Units of Measure:

- µg/g - Microgram per gram or ppm
- mg/Kg - Milligrams per Kilogram
- Aw - Water Activity unit

Test results relate only to the parameters tested and to the samples as received by the laboratory. Test results meet all requirements of NELAP and the Columbia Laboratories quality assurance plan unless otherwise noted. This report shall not be reproduced, except in full, without the written consent of this laboratory. Samples will be retained for a maximum of 30 days from the receipt date unless prior arrangements have been made.



12423 NE Whitaker Way  
Portland, OR 97230  
503-254-1794



**Report Number:** 20-006149/D04.R00  
**Report Date:** 06/23/2020  
**ORELAP#:** OR100028  
**Purchase Order:**  
**Received:** 06/16/20 09:05

Explanation of QC Flag Comments:

Code	Explanation
Q	Matrix interferences affecting spike or surrogate recoveries.
Q1	Quality control result biased high. Only non-detect samples reported.
Q2	Quality control outside QC limits. Data considered estimate.
Q3	Sample concentration greater than four times the amount spiked.
Q4	Non-homogenous sample matrix, affecting RPD result and/or % recoveries.
Q5	Spike results above calibration curve.
Q6	Quality control outside QC limits. Data acceptable based on remaining QC.
R	Relative percent difference (RPD) outside control limit.
R1	RPD non-calculable, as sample or duplicate results are less than five times the LOQ.
R2	Sample replicates RPD non-calculable, as only one replicate is within the analytical range.
LOQ1	Quantitation level raised due to low sample volume and/or dilution.
LOQ2	Quantitation level raised due to matrix interference.
B	Analyte detected in method blank, but not in associated samples.
B1	The sample concentration is greater than 5 times the blank concentration.
B2	The sample concentration is less than 5 times the blank concentration.